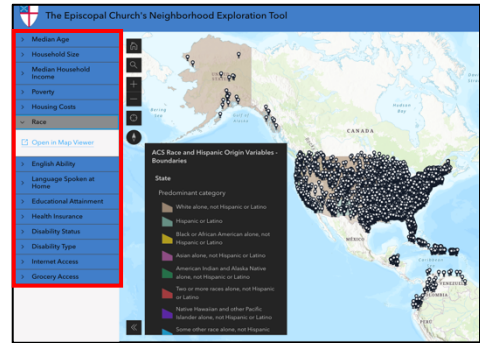
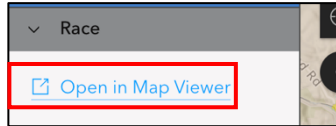


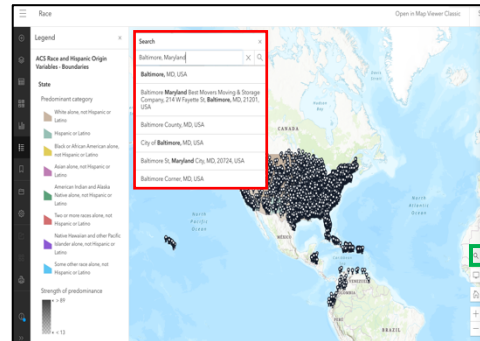
## Adding a Layer to The Episcopal Church's Neighborhood Exploration Tool

1. Select one of the **14 variable layers** provided by the tool (e.g. Poverty, Race, Grocery Access, etc.):

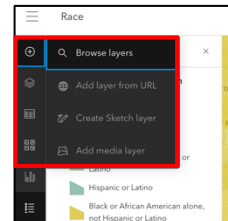
2. Click on “Open in Map Viewer” under the chosen layer:



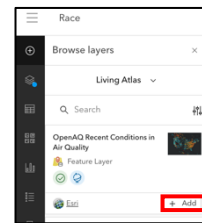
3. This will open another window in the browser. Click the **search icon** in the lower right corner and enter the address or place in the **search bar**.



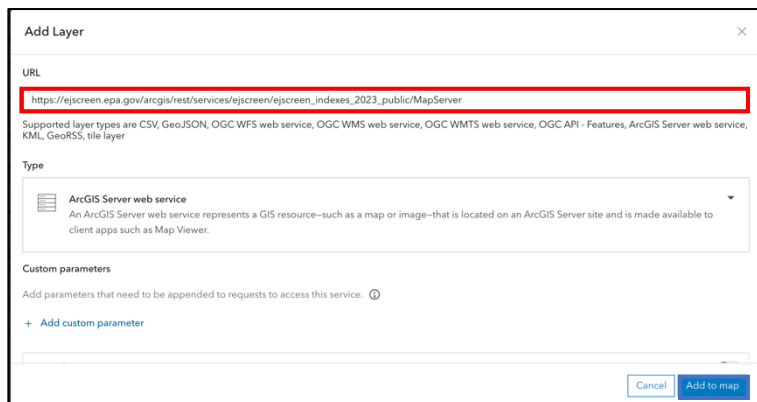
4. Click on the **Add button** in the top left corner. There are four options to choose from:



- a. **Browse layers** – This has two options - Living Atlas and ArcGIS Online. These are sources of base layers, maps, and data layers from around the world. (NOTE: Examine each source to help determine reliability and accuracy of data.) Search for any new variable/data to be used in the spatial analysis. Click on the **+ Add button** to bring the layer into the map.

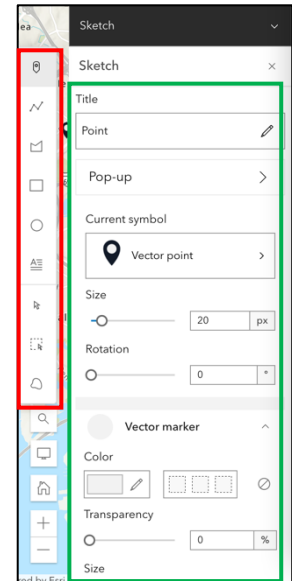
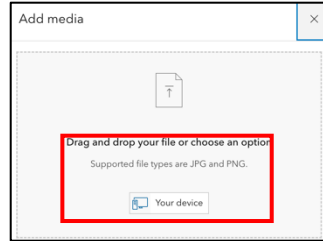


- b. **Add Layer from URL** – This allows maps and data sets from known sources to be added. Enter the **URL in the box** and click **Add to Map**. (A list of useful URLs is included on the last page of this handout.)

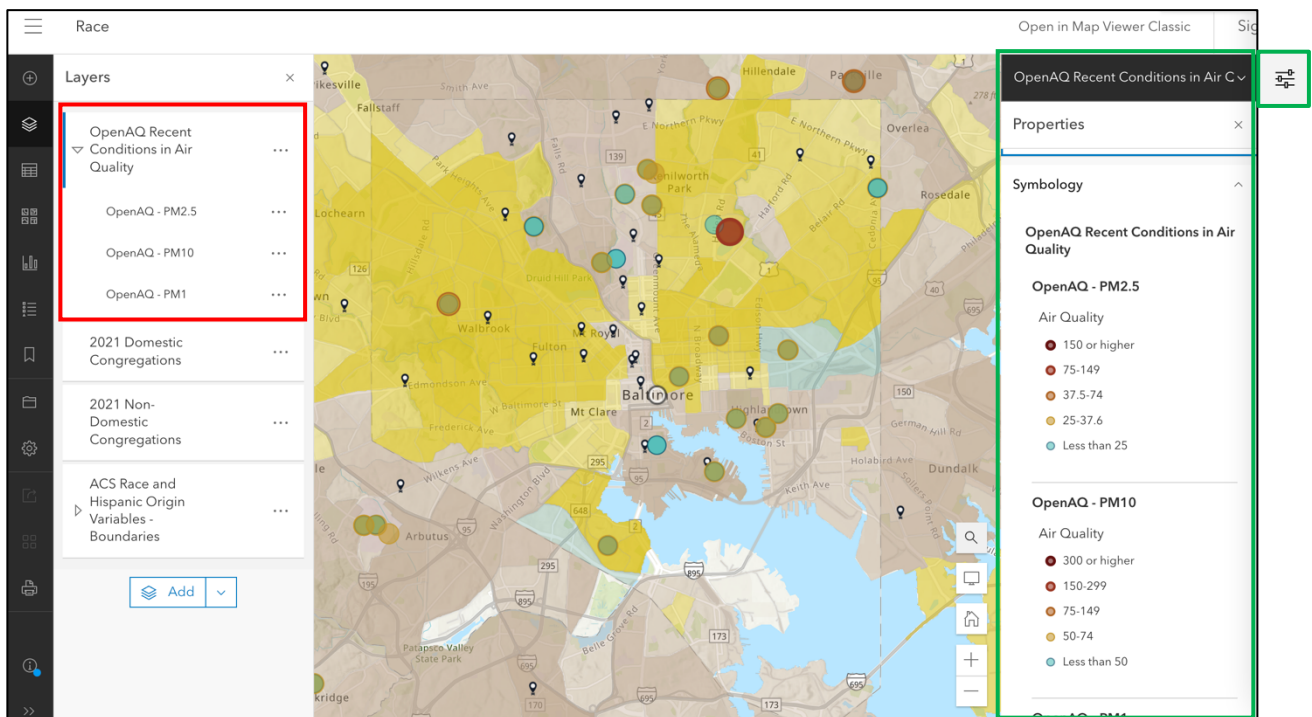


c. **Create Sketch layer** – This option allows points, lines, polygons, text, or selected features to be created as a new layer. Click on the **type of feature** you want to create and then **edit the properties**.

d. **Add media layer** – The final option allows a JPG or PNG file to be added to the map. **Drag, Drop or Navigate** to a file on the device to upload it to the map.



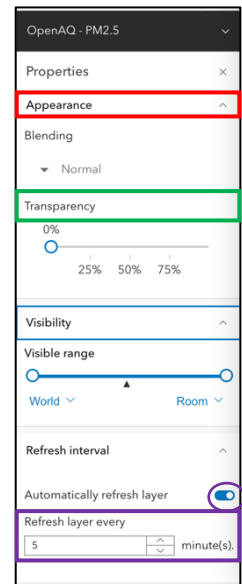
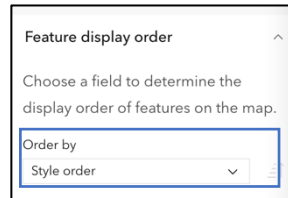
5. **All the layers** in the map will be listed on the left-hand side while the **properties of the highlighted layer** will appear on the right-hand side. Be sure to open any sub-layers by clicking on the **drop-down arrow** in the layers menu. These layers can be toggled on/off by clicking on the **Visibility** icon. The properties can be toggled on/off by clicking on the **Properties** icon on the right hand side of the screen.



- The Symbology for layers can be adjusted in the property menu. The **Appearance** can be blended or the transparency can be set from 0 to 100%. The **Visibility** range of the layers can be set to one of any 20 pre-set scales or to a custom scale range. The **automatic refresh** function is turned on by clicking the button and setting the time interval. Finally, the **Feature display** order is changed by clicking on the drop down arrow and selecting the desired order.

- The order of the layers can also be changed by dragging the desired layer to the top of the list and dropping it in that position. The layers are drawn in order from the bottom of the list to the top of the list.

- The map tools can now be used to explore the neighborhoods around Episcopal parishes, schools, cathedrals and other institutions.



## Sources of Environmental, Climate and Social Layers & MapServers

### **Data Hubs**

CDC's Geospatial Data Sources

<https://www.cdc.gov/gis/geo-spatial-data.html>

EPA's Geospatial Resources

<https://www.epa.gov/geospatial>

US Forest Service Data Discovery

<https://data-usfs.hub.arcgis.com/>

FEMA National Flood Hazard Layer

<https://www.fema.gov/flood-maps/national-flood-hazard-layer>

Health and Human Services Environmental Justice Resources

<https://www.hhs.gov/climate-change-health-equity-environmental-justice/environmental-justice/resources.html>

NOAA Maps and Geospatial Products

<https://www.ncei.noaa.gov/maps-and-geospatial-products>

NOAA Sea Level Rise Viewer

<https://coast.noaa.gov/digitalcoast/tools/slr.html>

### **Individual Layers**

CDC Social Vulnerability Index 2020

[https://www.atsdr.cdc.gov/placeandhealth/svi/data\\_documentation\\_download.html](https://www.atsdr.cdc.gov/placeandhealth/svi/data_documentation_download.html)

CDC Environmental Justice Index

[https://onemap.cdc.gov/OneMapServices/rest/services/EJI/Environmental\\_Justice\\_Index\\_2022/FeatureServer](https://onemap.cdc.gov/OneMapServices/rest/services/EJI/Environmental_Justice_Index_2022/FeatureServer)

EPA's Environmental Justice Screen:

[https://ejscreen.epa.gov/arcgis/rest/services/ejscreen/ejscreen\\_indexes\\_2023\\_public/MapServer](https://ejscreen.epa.gov/arcgis/rest/services/ejscreen/ejscreen_indexes_2023_public/MapServer)

EPA's EnviroAtlas:

[https://enviroatlas.epa.gov/arcgis/rest/services/National/National2016\\_master/MapServer](https://enviroatlas.epa.gov/arcgis/rest/services/National/National2016_master/MapServer)

Health Resources and Services Administration's (HRSA) Medically Underserved Areas

[https://gisportal.hrsa.gov/server/rest/services/Shortage/MedicallyUnderservedAreas\\_FS/FeatureServer](https://gisportal.hrsa.gov/server/rest/services/Shortage/MedicallyUnderservedAreas_FS/FeatureServer)

HRSA's Migrant Health Care

[https://gisportal.hrsa.gov/server/rest/services/HealthCareProviders/MigrantHealthCare\\_FS/FeatureServer](https://gisportal.hrsa.gov/server/rest/services/HealthCareProviders/MigrantHealthCare_FS/FeatureServer)

NOAA Sea Level Rise – 3 meter

[https://coast.noaa.gov/arcgis/rest/services/dc\\_slr/slr\\_9ft/MapServer](https://coast.noaa.gov/arcgis/rest/services/dc_slr/slr_9ft/MapServer)

Slave Trade Ports

[https://services2.arcgis.com/xsh7pVZv42relbEf/arcgis/rest/services/Slave\\_Trade\\_Ports/FeatureServer](https://services2.arcgis.com/xsh7pVZv42relbEf/arcgis/rest/services/Slave_Trade_Ports/FeatureServer)

### **Other Mapping Resources**

CDC's Environmental Justice Index

<https://onemap.cdc.gov/portal/apps/sites/#/eji-explorer>

CDC's National Environmental Public Health Tracking Network

<https://ephtracking.cdc.gov/DataExplorer/>

Census Bureau's Community Resilience Estimates

<https://experience.arcgis.com/experience/>

Climate Disaster & Risk Mapping

<https://coast.noaa.gov/digitalcoast/tools/slr.html>

Climate and Economic Justice Screening Tool

<https://toolkit.climate.gov/tool/climate-and-economic-justice-screening-tool>

Data.Gov

<https://catalog.data.gov/dataset/>

US Energy Atlas

<https://atlas.eia.gov/search>

Energy Justice Dashboard

<https://www.energy.gov/diversity/energy-justice-dashboard-beta>

FCC Broadband Funding Map

<https://fundingmap.fcc.gov/home>

List of 40+ Federal GIS Servers

<https://itsapps.kerncounty.com/GeoDat-supportingdocs/PDFs/list-federal-GIS-servers.pdf>

Minority Health Social Vulnerability Index

<https://www.minorityhealth.hhs.gov/minority-health-svi/>

National Renewable Energy Laboratories

<https://www.nrel.gov/gis/data-tools.html>

NIEHS COVID-19 Pandemic Vulnerability Index

<https://covid19pvi.niehs.nih.gov/>

Not Even Past: Social Vulnerability and the Legacy of Redlining

<https://dsl.richmond.edu/socialvulnerability/>

NTIA's Indicator of Broadband Need

<https://broadbandusa.maps.arcgis.com/apps/webappviewer/index.html?id=50c64e2c028d46a58247125e4bcdcdc8>

Open Source GIS Data

<https://opensourcegisdata.com/>

<https://opensourcegisdata.com/department-of-energy-gis-data-sources.html>

Opportunity Atlas

<https://www.opportunityatlas.org/>